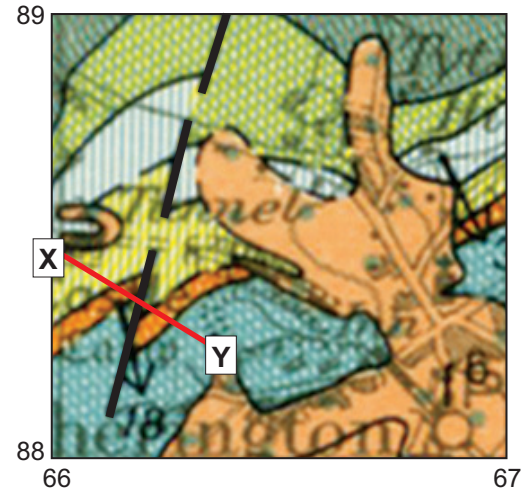
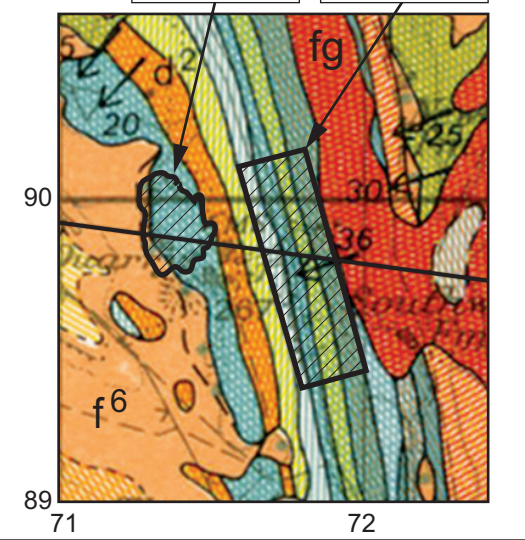


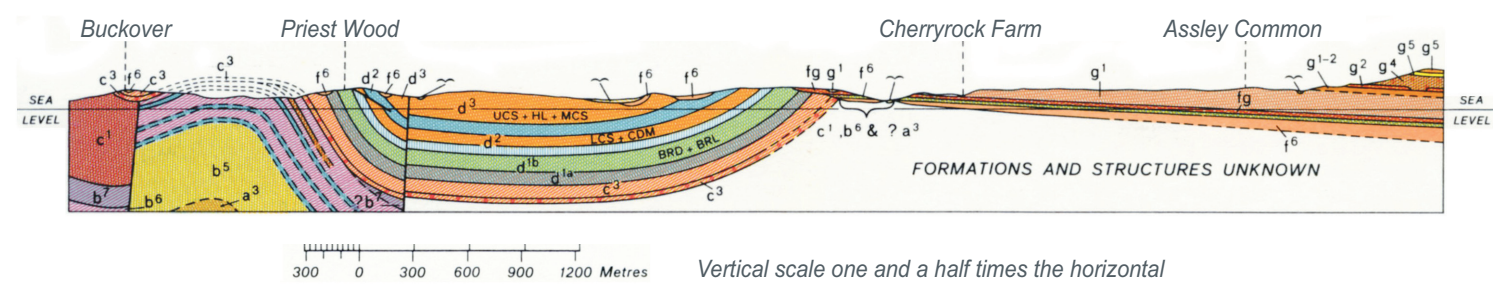
MAP P



MAP Q

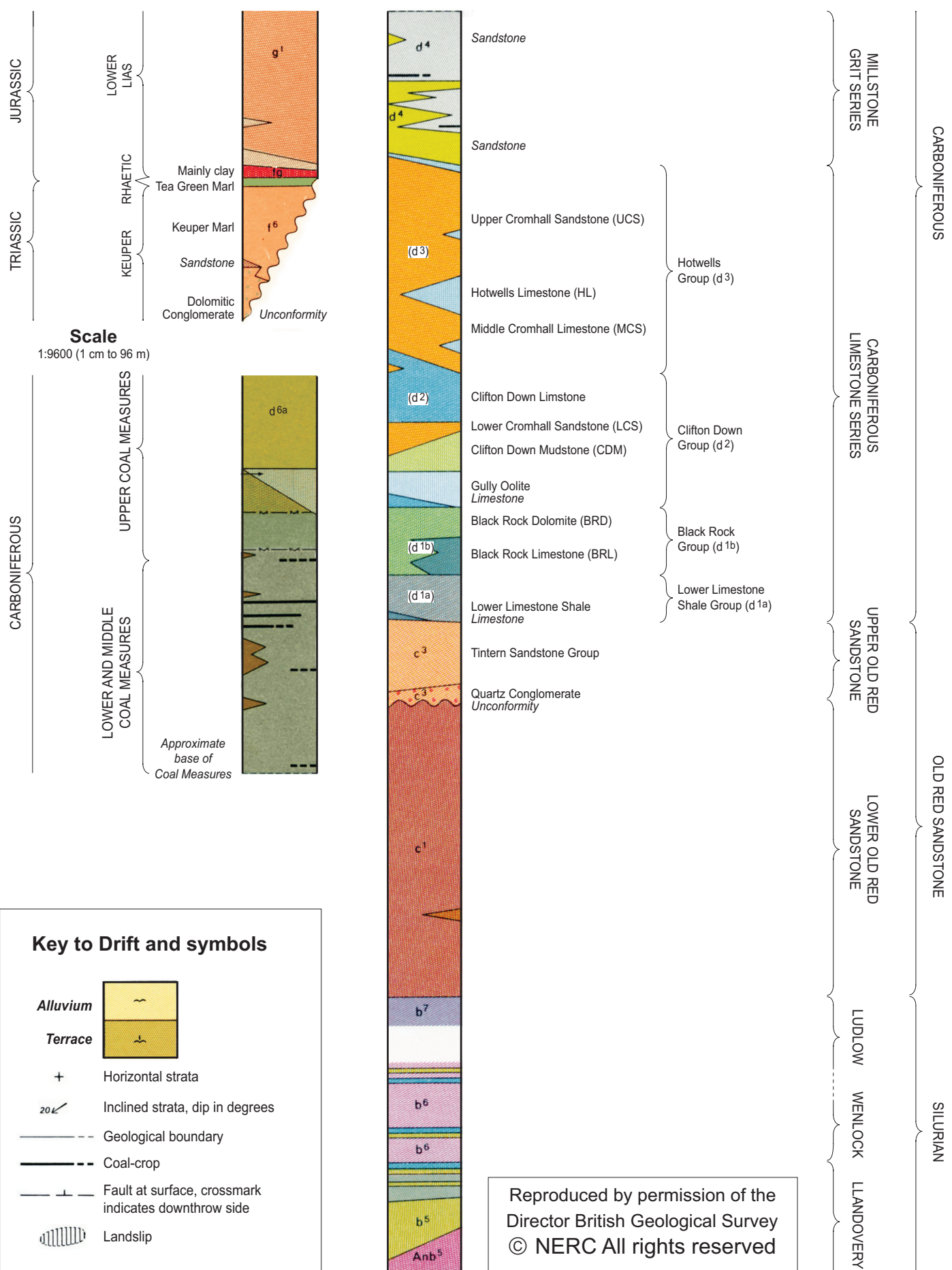


CROSS SECTION SHOWING THE GENERAL RELATIONS OF ROCKS ALONG LINE OF SECTION



GENERALISED VERTICAL SECTION
Scale 1:9600 (1 cm to 96 m)

Not drawn to scale



Key to Drift and symbols

- Alluvium
- Terrace
- Horizontal strata
- Inclined strata, dip in degrees
- Geological boundary
- Coal-crop
- Fault at surface, crossmark indicates downthrow side
- Landslip

Reproduced by permission of the
Director British Geological Survey
© NERC All rights reserved